

[www.fyf.or.kr](http://www.fyf.or.kr)

# FUTURE FOR YOUTH FOUNDATION

## 2023 Annual Report

# CONTENTS

Greetings	004
2023 FYF History	006
2023 Business Performance	008
2023 Foundation Operational Performance	010
Donation Status HISTORY	012
About the Foundation	014
Certifications & Awards Received	016
How to Support FYF	018

2016-2023

**Top Rated for 8 consecutive years**



We have been recognized as a Star Public Benefit Organization for eight consecutive years, a rare distinction among public benefit organizations, by Korea Guide Star, an organization that measures the transparency and efficiency of public benefit organizations.





We will be a faithful welfare foundation that takes the lead for the future of children, youth, and young people who have become the main players of our country.

---

I would like to express my sincere respect and gratitude to the donors who have been with us for the great future of our youth in 2023.

In the past year, we raised approximately KRW 37 billion through close partnerships with our generous sponsors, and implemented 53 social contribution projects. In partnership with meaningful sponsors, and implemented more than 53 different social contribution projects.

In particular, this year, we expanded our traditional social contribution projects into three broad areas: talent development, environment creation, and welfare campaigns to create opportunities for more children and youth to dream of a happier future.

In our 2023 Annual Report, we're pleased to share with you a year in review of the work we've done with your trust and support with your trust and support.

We hope you'll consider this the least we can do to thank our donors for their faith and support. We hope you'll consider this the least we can do.

We hope you find this report a valuable way to connect with your donors.

We wish you all the best this year and hope that the contents of this report become a happiness virus for our society.

2024. 1. 31

LEE Hoon-kyu Chairman  
FUTURE FOR YOUTH FOUNDATION

*A. K. Lee*



# 2023 FYF HISTORY

## JANUARY

# 01

- SGI Seoul Guarantee donates 'Blue Chung Chun' scholarships to youth leaving child care centers
- KB Kookmin Bank provides emergency support of KRW 500 million for heating bills for vulnerable groups
- Hewlett Packard Enterprise donated KRW 30 million in educational scholarships for young adults preparing for independence
- Samsung SSAFY, Samsung Youth SW Academy 9th entrance ceremony, enrolling 1,150 students
- Samsung Card Open Mentoring, the 12th class of university student mentors was inaugurated
- Samsung Card Open Mentoring, mentor/mentee OT and pre-training

## FEBRUARY

# 02

- Donated KRW 15 million to the 'LH Happy Meal Program' for children living in rental houses
- Completed the Mercedes-Benz Green Plus Village, an environmental education program for children.
- Launched Uniqlo's "Slowly Together" campaign for children with slow learning, donating KRW 1 billion
- LH Mentor and Little Friend, child mentoring program, held a report on the performance of child mentoring activities
- Conducted DB Dream Mentoring, Scholarship Award Ceremony and New Start Camp
- Held the KB Dream Wave 2030 KB Law School, 1st secondary school mentors and mentees inauguration ceremony

## MARCH

# 03

- Doonamu Recruits Schools to Participate in 'Dooniverse', a Digital Financial Education Program for Youth
- Genji eSports donates KRW 5 million in prize money from the Legends Charity Match
- Amorepacific Empathy Foundation hosts Look at ME Youth Mind Campus, a program to promote mental health among students
- Samsung Card, organized annual hands-on volunteer activities
- DB Insurance, organized monthly employee volunteer activities

## APRIL

# 04

## MAY

# 05

- Mercedes-Benz Community Service Committee organizes the 10th Give & Race, Raised KRW 1 billion in donations for vulnerable children and youth
- Mercedes-Benz Social Contribution Committee organized the 16th Mobile Academy career development workshop
- Shinhan Card Beautiful Library won the Grand Prize in the Social Contribution Category at the 2023 National Industry Awards
- Kakao Bank donated KRW 160 million to financial education project 'Everyone's Independence' for youth preparing for self-reliance

- Actress Park Bo-young donates KRW 100 million to improve the environment at Seoul Children's Hospital in honor of Children's Day
- KB Insurance makes and delivers 1,000 traffic safety key rings for children's safe return home through employee volunteer activities
- Uniqlo launches mentors for "Slowly Together" campaign for children with slow learning disabilities
- Mercedes-Benz Corporate Social Responsibility Committee, sponsored underprivileged sports dreamers GIVE 'N DREAM scholarships worth KRW 150 million
- Korea Janssen, Paul Janssen Scholarship Fund Employee Program Scholars' Children's Day Gift Support
- Samsung Card Open Mentoring, capacity building training for mentors

## JUNE

# 06

- Mercedes-Benz Social Contribution Committee Holds Completion Ceremony for Forest Restoration in Dohwa-dong, Ulsan-gu, Gyeongsangbuk-do, South Korea
- Kakao Mobility provides coding training to children of Junior Lab taxi drivers
- Mercedes-Benz Social Contribution Committee delivers 20 EQB electric SUVs to social welfare organizations
- Samsung SSAFY and Samsung Youth SW Academy signed business agreements with four major banks (Shinhan, KB, Hana, and Woori) Samsung SSAFY, Samsung Youth SW Academy 8th Graduation Ceremony
- Held a ceremony to inaugurate LH Mentor and Little Friend, a university student mentor program for mentoring children
- Shinhan Financial Group, organized "Global ONE Volunteer Festival" for employee volunteer activities
- Samsung Card, family volunteer program for employees, "Building a new home" in Gyeongangcheon Wetland Ecological Park, Gwangju, Gyeonggi-do, Korea
- Kakao Bank held a ceremony to inaugurate mentors for youth preparing for self-reliance

## JULY

# 07

- Mercedes-Benz Mobile Academy Honors Scholars Visit German Headquarters
- Hyundai Autoever launches 'Smart Mobility Engineering Experience Education' university student mentor group
- KB Kookmin Card donates KRW 100 million to foster digital talent among youth in rural areas
- P&G Korea donates KRW 30 million for flood recovery after torrential rains
- LH Happy Bap Sang provides lunch boxes to children living in 110 rental housing complexes
- Uniqlo's "Slowly Together" campaign, organized play sports to improve social skills of children with slow learning disabilities
- Hyundai E&C Hillstate Dreamkium Mentoring Volunteer Program, 9th edition, held a completion ceremony
- Samsung SSAFY, Samsung Youth SW Academy's 10th enrollment ceremony, enrolling 1,150 students

## AUGUST

# 08

- Hana Financial launches the second edition of the 'Hana Digital Power On Project' to foster young digital talents
- Mercedes-Benz Social Contribution Committee completes GREEN+Kids environmental education program for children
- Korea Hydro & Nuclear Power, held a ceremony to deliver 'Safe Car Plus' children's commuting vehicles to child welfare facilities nationwide
- Operated mobility schools for middle school students in Hyundai Wea, Uiwang, and Changwon

- Shinhan Dream Tutor provides social development education for children
- Conducted Dream-up Summer Camp, a scholarship support program for children of traffic accident victims
- SGI Seoul Guarantee to organize cultural activities for scholarship recipients of the 'Dreamers Hope Partner Scholarship Fund' Organized musical performances
- AstraZeneca Korea's Hope Fountain Fund, 'Hope Story Program'
- Hanwha Life Insurance Economic Classroom, online financial golden bell for children/youth
- Kakao Mobility Junior Lab, "Free coding education program for taxi drivers' children" completion ceremony
- DB Mentoring, "Jump Up Camp" for scholarship students
- Samsung Card Open Mentoring, online capacity building training for mentors and mentees

## SEPTEMBER

# 09

## OCTOBER

# 10

- Shinhan Card Holds Opening Ceremony for the 1st Beautiful Library in Seoul's Waterfront Sensibility City, a Healing Space in the City Center
- Samsung SSAFY and Samsung Youth SW Academy business agreement ceremony (NH)
- Mercedes-Benz Social Contribution Committee, signed an agreement to promote traffic safety prevention for children
- Mercedes-Benz Social Contribution Committee, GREEN+Kids environmental excellence program Selected for environmental education program
- Uniqlo "Slowly Together" campaign, economic education to improve the social skills of slow-learning children
- Shinhan Card held the opening ceremony of the Beautiful Library at Re & Upcycle Plaza in Gangdong-gu, Seoul
- Launched the 10th edition of Hyundai E&C's Hillstate Dreamkium Mentoring Volunteer Program
- Samsung Card organized a beachcombing program to strengthen employee family volunteer activities

- Amorepacific Empathy Foundation, Look at ME Youth Mind Campus (Sookmyung Women's University, Dongdeok Women's University, Seoul Women's University)
- Mercedes-Benz Green Plus, 'Green Plus Village', an environmental education program for children
- Completion of the Mercedes-Benz Green Plus Urban Forest Project, Myeongil, Seoripul, and Maljuk Street Parks
- Held an awareness campaign for borderline intelligent people in Seoul and operated a booth at the Foundation's booth
- AstraZeneca Korea's Hope Fountain Fund organized 'Hope Island Expedition'
- LH Mentors and Little Friends, child mentoring program for university students to strengthen mentors' capabilities
- Held the inauguration ceremony for the first batch of mentors and mentees for KB Dream Wave 2030 KB Law School Secondary School
- Samsung Card Open Mentoring, capacity building training for mentors Conducted mural painting volunteer activities for DB Insurance, Children's Hospital

## NOVEMBER

# 11

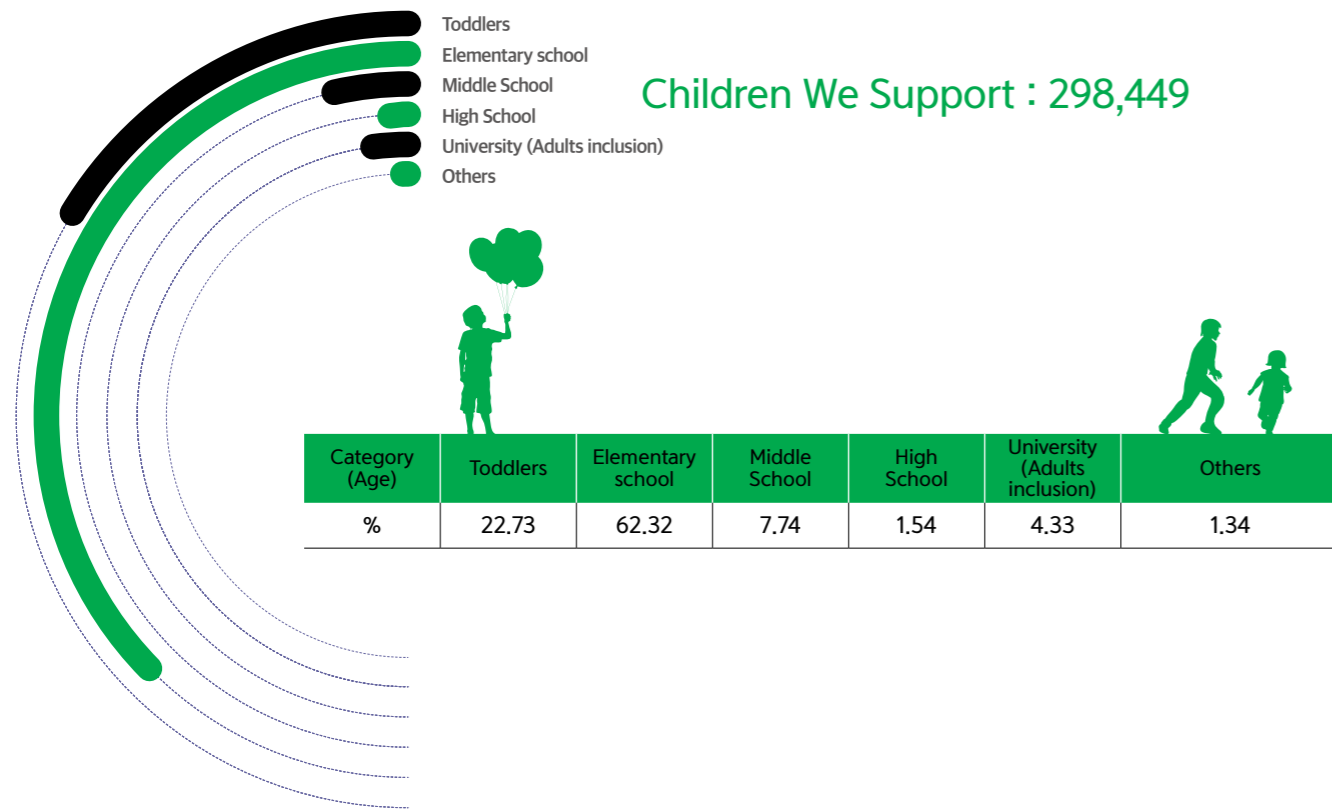
- Shinhan Card Holds '5th Beautiful Reading Quiz Contest' to Foster Children's Financial Literacy
- Mercedes-Benz Community Service Committee donates 7 pine trees to the Seoul Plaza Forest (Phase 1)
- Mercedes-Benz Social Contribution Committee signs MOU to support 'Fire Forest Restoration' in Gangneung, South Korea
- Samsung Electronics, 'Semiconductor Science Classroom' to nurture future science and technology dreamers
- Shinhan Card, Hosted the 22nd Little Picasso Painting Festival Award Ceremony
- SGI Seoul Guarantee organized a career concert to explore the career paths of scholarship recipients of the 'Dreamer's Hope Partner Scholarship Fund'
- Mercedes-Benz Social Contribution Committee Signs MOU to Support 'Firebreak Forest Creation' to Restore Damage from Gangneung Forest Fire
- Samsung Card Open Mentoring, mentoring employees for mentors
- Samsung Life Insurance, volunteered to plant trees along the circumference of Mount Angbongsan

## DECEMBER

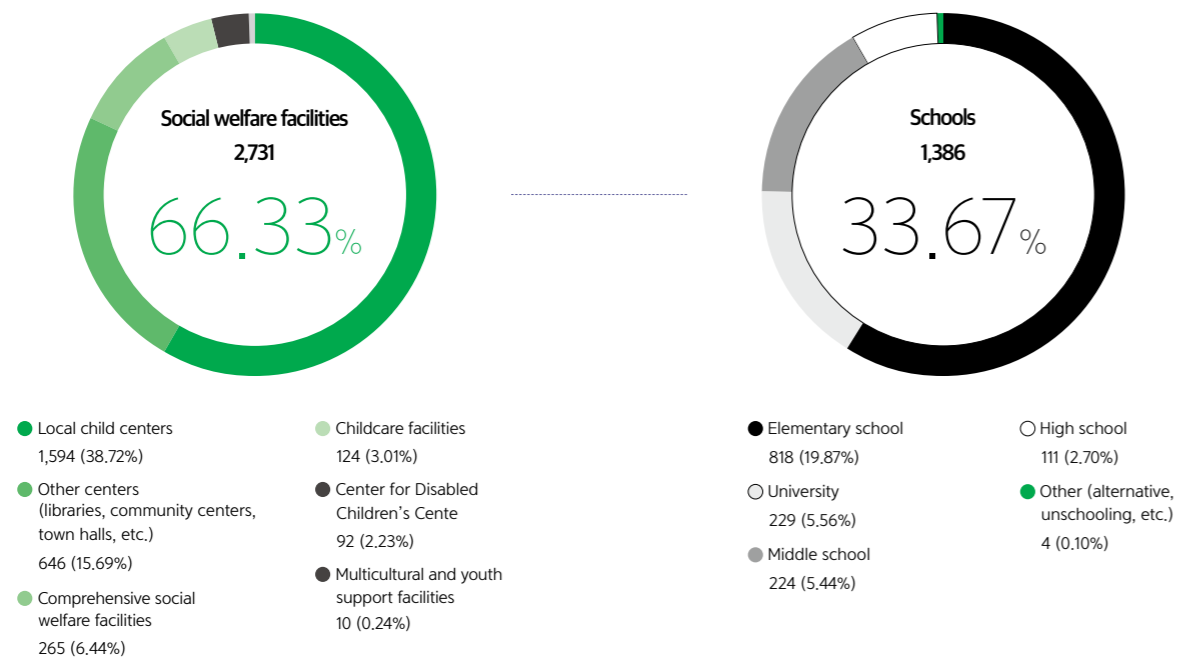
# 12

- Mercedes-Benz GreenPlus inaugurates the first GreenPlus Zone
- SGI Seoul Guarantee held a sponsorship agreement for the 'Blue Dream Hope Partner Scholarship Fund'
- Held the 3rd termination ceremony of the Stump Learning Mentoring Program
- Held a mentor dismissal ceremony for UNIQLO's "Slowly Together" campaign for slow-learning children
- Held the closing ceremony for the 12th term of Samsung Card Open Mentoring, a mentoring program for university students
- Samsung SSAFY, Samsung Youth SW Academy's 9th graduation ceremony
- Kakao Bank, held a mentor graduation ceremony for youth preparing for self-reliance
- Shinhan Financial Group, concluded the "Global ONE Volunteer Festival" for employee volunteer activities
- Samsung Card, completed annual hands-on volunteer program
- DB Insurance, held monthly employee volunteer program

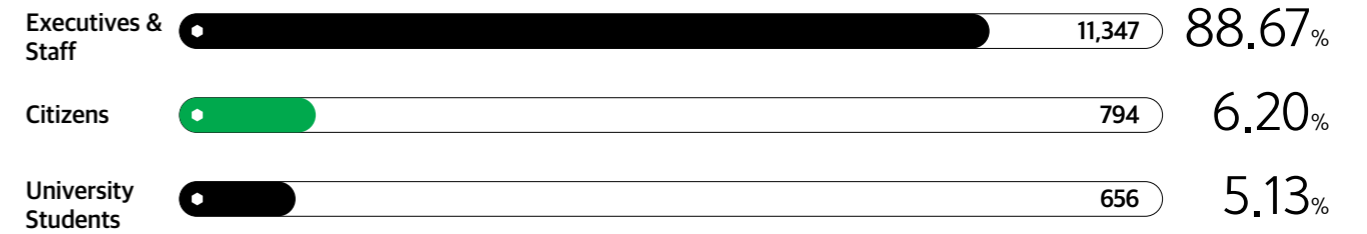
## 2023 Business Performance



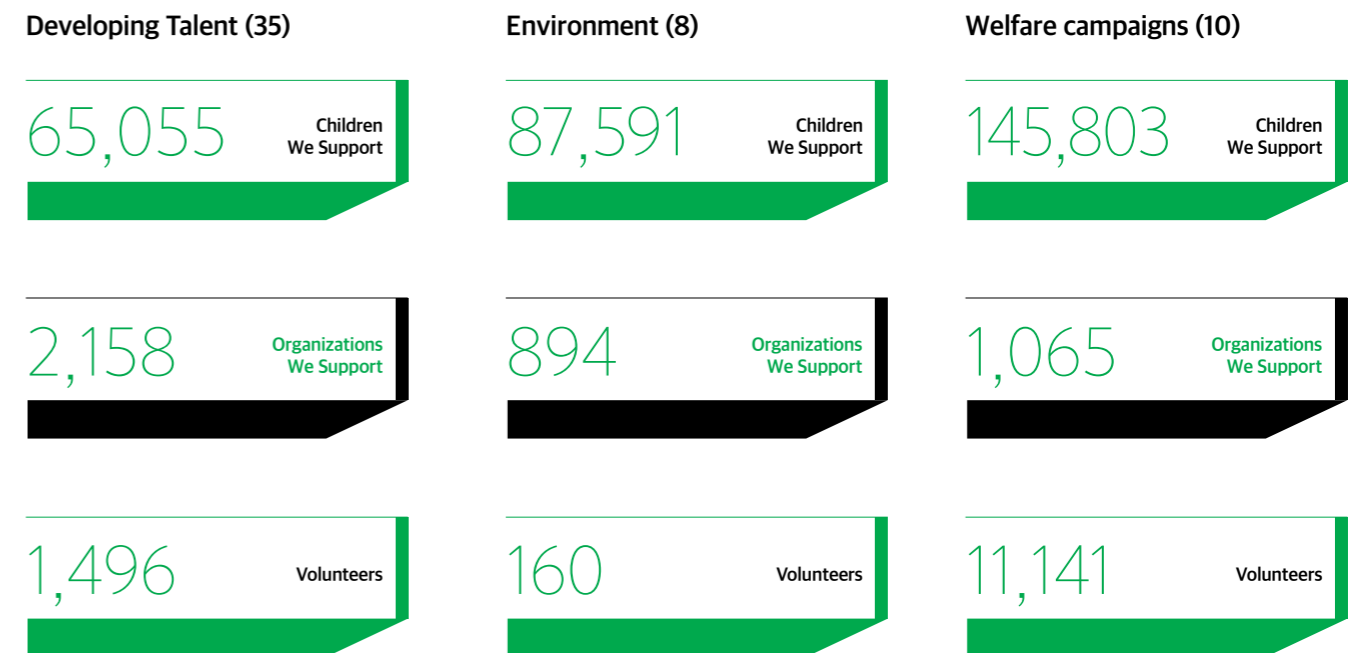
### Organizations We Support : 4,117



### Volunteers : 12,797



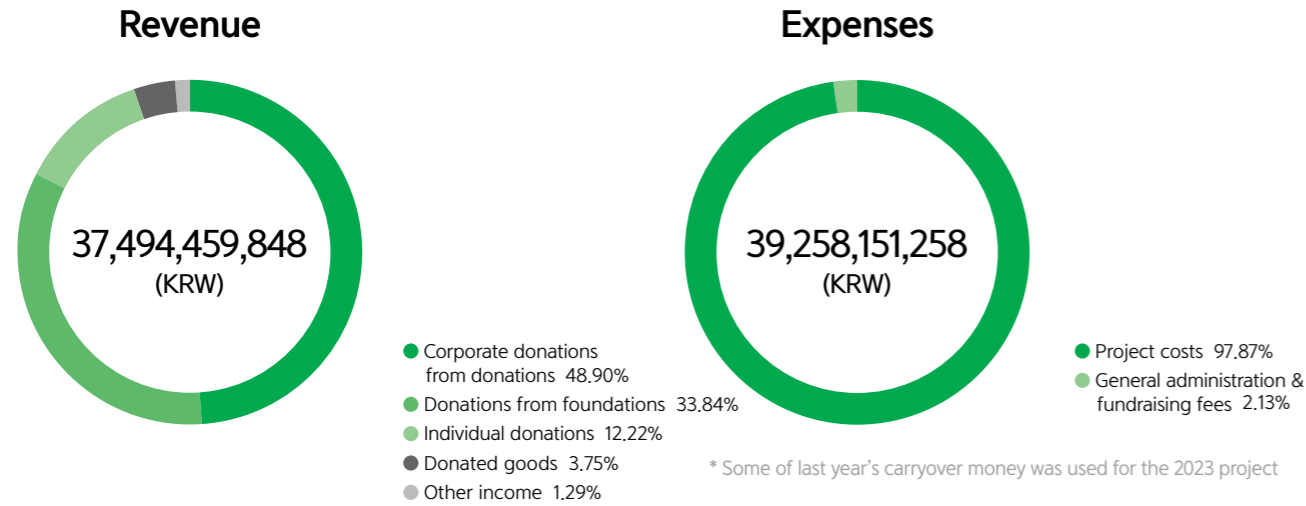
### Corporate social responsibility projects by area (53 in total)



\* The data above is based on each of our corporate social responsibility programs as published in our 2023 Annual Report.

# 2023 Foundation Operational Performance

based on Accounting Standards for Not-for-profit Organizations



## FYF's Revenue (past 3 years)

Category	2021	2022	2023
Corporate Donations	14,192,280,595	13,998,780,279	18,334,540,523
Donations from foundations	4,485,944,252	13,872,586,169	12,686,633,932
Individual Donations	2,592,784,939	3,682,947,069	4,583,208,535
Donated goods	707,789,078	824,318,700	1,405,920,179
<b>Subtotal (Donation income) (A)</b>	<b>21,978,798,864</b>	<b>32,378,632,217</b>	<b>37,010,303,169</b>
Other revenues (B)	126,858,309	121,951,843	484,156,679
<b>Subtotal (Other revenues) (A + B)</b>	<b>22,105,657,173</b>	<b>32,500,584,060</b>	<b>37,494,459,848</b>
Carry-over from previous year	14,545,377,483	12,869,244,027	20,419,513,749
<b>Total</b>	<b>36,651,034,656</b>	<b>45,369,828,087</b>	<b>57,913,973,597</b>

(Unit : KRW)

## FYF's Expenses (past 3 years)

Category	2021	2022	2023
Public Benefit Expenses	23,027,445,290	24,176,166,997	38,420,489,056
General and administrative expenses and fundraising	759,749,516	828,828,245	837,662,202
<b>Subtotal</b>	<b>23,787,194,806</b>	<b>25,004,995,242</b>	<b>39,258,151,258</b>
Carryover to the next year	12,869,244,027	20,419,513,749	18,689,731,245

(Unit : KRW)

## 2023 Foundation Employee Labor Cost Configuration

Category	Project staff	Management staff	Fundraising staff	Total
Cost	1,628,304,593	545,427,106	50,546,369	2,224,278,068

(Unit : KRW)

## Current State of Costs for Public Utilities Projects

Category	Distribution	Human resources	Facility	Others	Total
Business Performance	19,218,370,831	1,628,304,593	132,324,282	17,441,489,350	38,420,489,056
Management		545,427,106	48,117,921	119,478,667	713,023,694
Fund-Raising Expenses		50,546,369	9,022,111	65,070,028	124,638,508
<b>Total</b>	<b>19,218,370,831</b>	<b>2,224,278,068</b>	<b>189,464,314</b>	<b>17,626,038,045</b>	<b>39,258,151,258</b>

(Unit : KRW)

## Major corporate donors in 2023

Group companies	Number of projects	Donations	Direct business expenses	Management fees
Samsung	6	11,533,080,000	13,977,802,891	4,774,664,427
Shinhan Financial	7	8,069,000,000	6,365,378,864	4,734,491,938
Mercedes-Benz Social Contribution Committe	5	4,165,922,817	5,461,860,070	312,300,000
LH	3	2,080,000,000	2,533,938,810	193,400,000
Hana Financial	2	1,956,831,352	1,967,183,320	273,000,000
KB Financial	3	1,187,818,000	1,246,704,059	116,238,000
FRL Korea	1	1,000,000,000	850,100,000	148,000,000
Korea Hydro & Nuclear Power	1	1,000,000,000	1,356,220,200	145,000,000
DB Financial	2	511,100,000	564,766,973	126,000,000
Hyundai Motor Company	3	490,000,000	402,243,537	46,610,000
Hanwha	3	310,000,000	258,290,904	22,600,000
Dunamu	2	300,000,000	308,784,000	29,150,000
Kakao	2	290,000,000	275,300,000	31,000,000
AstraZeneca Korea	1	255,031,000	230,980,745	24,903,416
SGI Seoul Guarantee	2	200,000,000	207,088,274	22,900,000
Korea SMC	1	150,000,000	185,487,250	21,000,000
Burberry	1	130,000,000	110,500,000	19,500,000
POSCO	1	100,000,000	119,904,650	12,000,659
<b>Total</b>	<b>46</b>	<b>33,728,783,169</b>	<b>36,422,534,547</b>	<b>2,494,560,440</b>

\* Direct business expenses reflect a portion of the 2022 carryforward.

(Unit : KRW)

## Detailed status of project necessary expenses in 2023

2023 Accounting Standards for Public Interest Corporations

Category	Total	Project costs	General administration	Fundraising fees
1. Purpose Project Expenditure	36,659,860,181	36,659,860,181	-	-
1) Domestic	36,571,714,606	36,571,714,606	-	-
2) International	88,145,575	88,145,575	-	-
2. Payroll costs	1,800,969,324	1,320,567,367	442,895,273	37,506,684
3. Severance payment	210,744,122	153,465,166	49,910,538	7,368,418
4. Social Insurance Contribution	165,907,630	121,686,224	40,771,901	3,449,505
5. Welfare benefit	42,343,952	29,573,554	10,754,019	2,016,379
6. Business promotion expenses	39,986,420	-	39,986,420	-
7. Fund-raising expenses	65,070,028	-	-	65,070,028
8. Meeting costs	12,698,990	-	12,698,990	-
9. Travel and transportation expenses	1,150,489	-	1,150,489	-
10. Communication expense	2,933,310	-	2,933,310	-
11. Rent, hire (that one pays)	134,508,000	93,942,095	34,160,762	6,405,143
12. Tax and public imposts	1,911,460	856,980	996,049	58,431
13. Repairing expenses	14,350,800	10,022,781	3,644,648	683,371
14. Insurance	102,850	-	102,850	-
15. Vehicle maintenance cost	7,708,013	5,383,374	1,957,591	367,048
16. Education and training cost	4,313,040	3,012,282	1,095,375	205,383
17. Book purchase and printing cost	2,679,910	-	2,679,910	-
18. Office supply cost	16,028,820	-	16,028,820	-
19. Commission fee	29,184,395	-	29,184,395	-
20. Outside order expenses	13,827,650	-	13,827,650	-
21. Domestic and international network project expenses	201,413	-	201,413	-
22. Depreciation cost	22,035,461	15,389,846	5,596,307	1,049,308
23. Amortization of intangible asset	9,635,000	6,729,206	2,446,984	458,810
<b>Total</b>	<b>39,258,151,258</b>	<b>38,420,489,056</b>	<b>713,023,694</b>	<b>124,638,508</b>

(Unit : KRW)

# Donation Status HISTORY

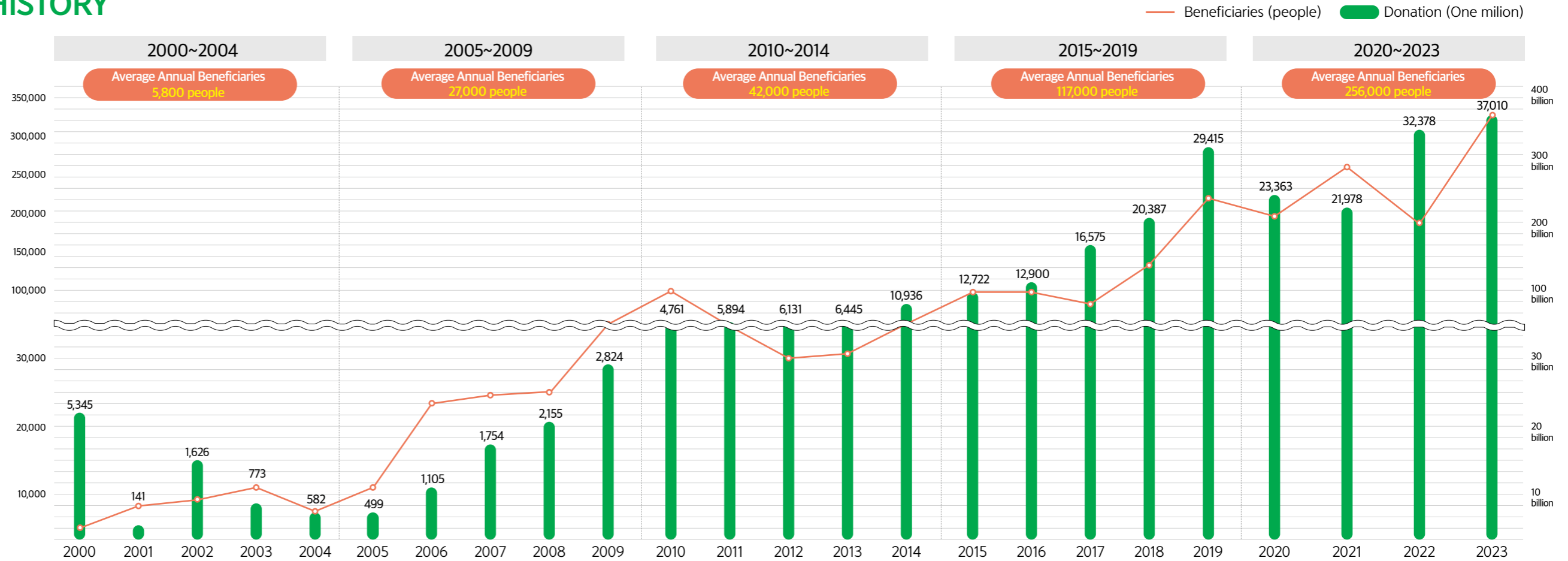
Donations in 2023 (excluding other revenue)

37,010,303,169

Cumulative donation in 2000~2022

258,199,461,940

Cumulative donations  
Achieved  
250 billion won



\* The donation amounts in this graph are netted.

### The first step to closing the education gap

We've taken a proactive approach to closing the education and information gap by supporting out-of-home child education programs education and information gaps by supporting programs to educate out-of-home children.

- KB Dream Wave 2030 Law School Secondary
- LH Mentor and Little Friend
- Mercedes-Benz Green Plus

### Supporting scholarships so everyone can dream

To help children from disadvantaged backgrounds pursue their dreams, we offer various forms of scholarship support and emotional support programs.

- Samsung SSIFY Youth SW Academy
- Woori Bank Our Dream.Dream.Hall
- AstraZeneca Korea Hope Fund

### Helping kids develop aptitudes for careers

We support various career experience programs to help children discover their aptitudes and nurture their dreams by providing opportunities and environments for aptitude development.

- Samsung Card Open Mentoring
- Shinhan Dream Doctor
- Korea Hydro & Nuclear Power Safe Car Plus

### Public campaigns to spread a culture of giving

We partner with social exemplars to spread a culture of voluntary giving in our society through corporate employee volunteerism, nationwide giving marathons, and more

- Mercedes-Benz All Together
- Mercedes-Benz Give
- Samsung Card Open Sharing

### Cultivating creative, convergent talent

We cultivate creative and convergent talents for the 4th Industrial Revolution through STEAM (Science, Technology, Engineering, Arts, and Mathematics) education to develop new talents who can think outside the box.

- Mercedes-Benz Mobile Academy
- Burberry Foundation Creative Arts Convergence Education
- Woori Financial Future Foundation Woori Future Seoul Runner

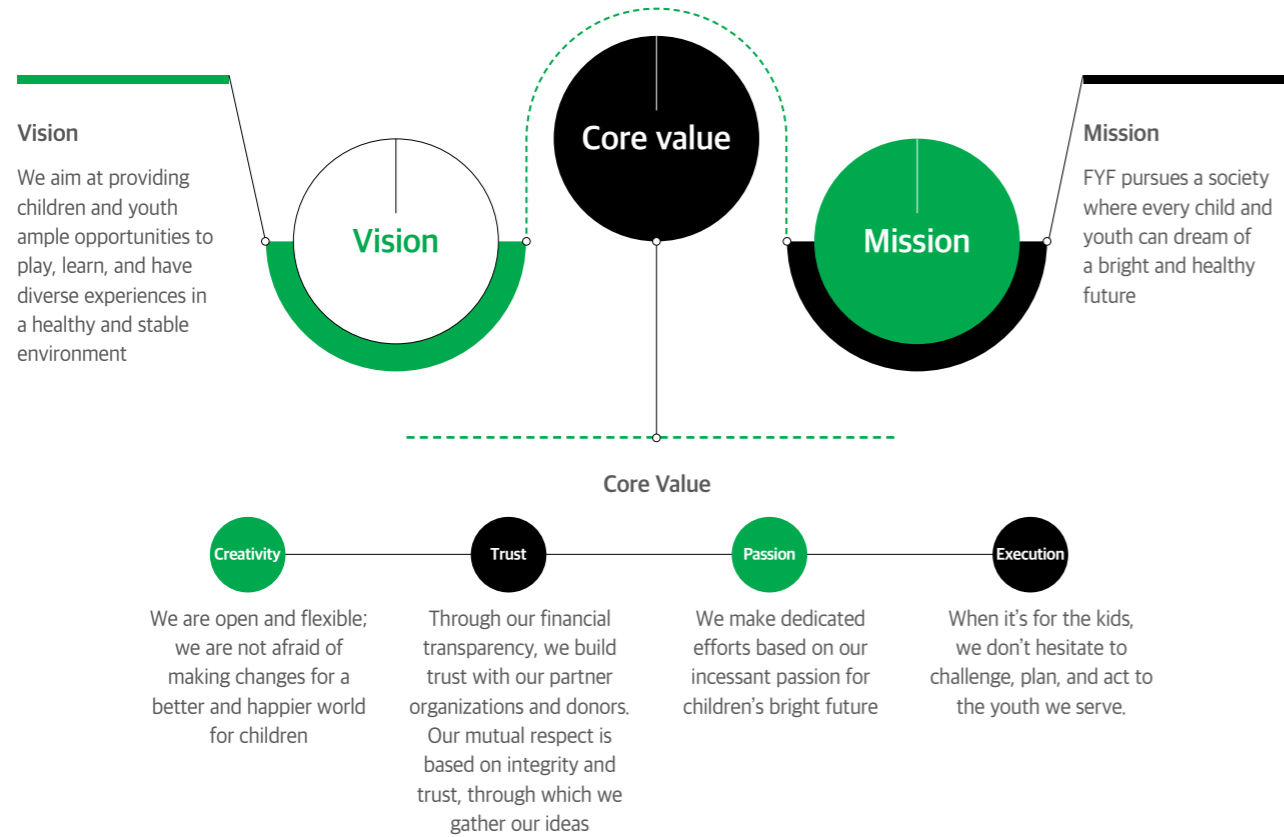
### Closing the education gap

Help children grow up healthy by providing special education for children who are illiterate or slow learners, and personalized mentoring for slow learners to reach hard-to-reach populations.

- Teaching Young Adults with Borderline Intelligence and Slow Learners
- Stump Learning Mentoring with LikeEdu
- Uniqlo slow learner education support

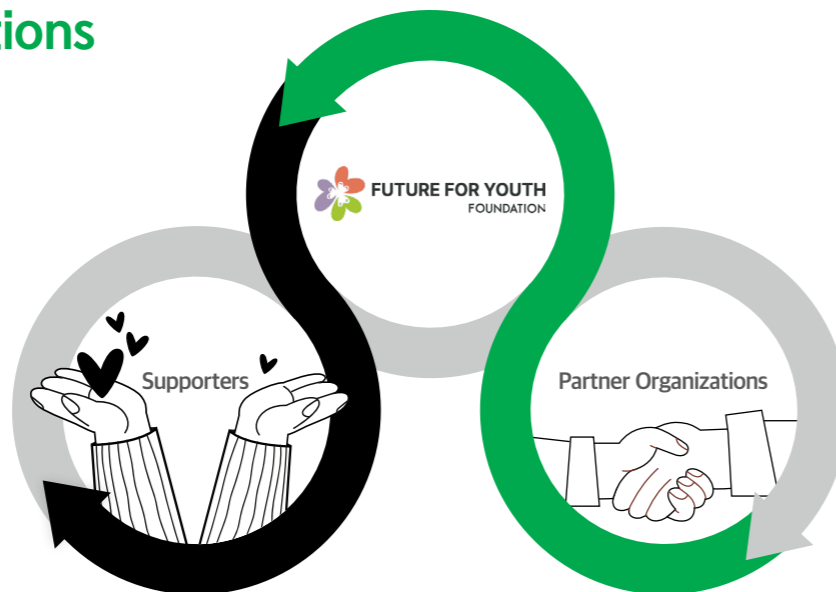
\* Each major business was selected based on its size and years of operation.

## About the Foundation



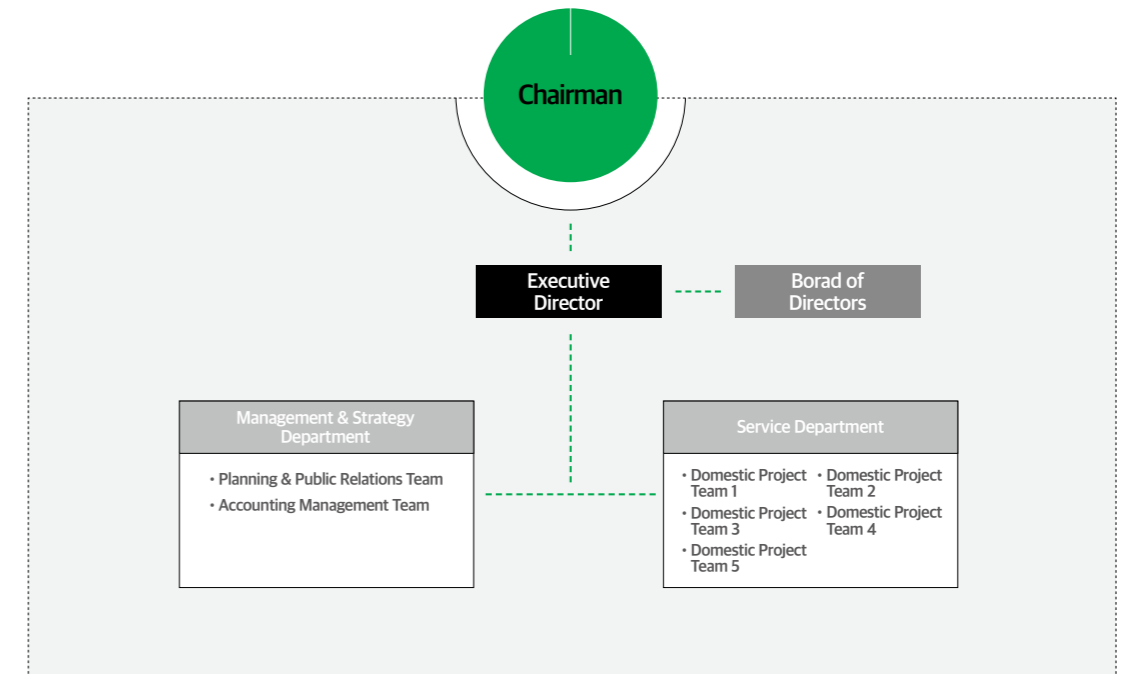
## The role of foundations

We serve as a CSR Total Solution Partner to fulfill corporate social and public interest responsibilities by partnering with domestic and overseas companies to strategize, plan, propose, and professionally execute projects to realize CSR projects that fit each company's vision and business.



## Organization Chart

### Organization Chart



### Board of Directors

Position	Name	Previous & Current Affiliations	Term
Chairperson	Hun-kyu, Lee	Present: Chairman, FYF Previous: President, CHA University Previous: Director, Incheon District Prosecutors' Office	2022.03.17~2025.03.16
Executive Director	Du-jun, Park	Present: Executive Director, FYF Present: Research Committee Member, GuideStar Korea Present: Steering Committee Member, Samsung Youth Academy (SSAFY)	2021.05.22~2024.05.21
Director	Byeong-bae, Kim	Present: Representative of Fair Trade Action Group Previous: U.S. Attorney, Kim & Chang Law Firm	2023.01.20~2026.01.19
	Won-yong, Kim	Present : Kim Anjang, Director, Future Society Research Institute	2022.06.28~2025.06.27
	Eun-kyung, Shin	Previous: Professor, CHA University Previous: Korea Youth Work	2021.04.26~2024.04.25
	Eun-sook, Cho	Present: Director of Dongjak Completion Social Welfare Center Previous: Director, Welfare Planning Division, Dongjak-gu Community Security Council	2023.11.12~2026.11.11
	Hyung-hye, Jin	Present: Lawyer, GL Law Firm	2022.07.16~2025.07.15
	Young-man, Hong	Present: Samjung KPMG Advisors Previous: President, Korea Asset Management Corporation	2022.08.01~2025.07.31
	Auditor	Joo-woong, Lee	Present: Attorney at Law Firm (Yu) Won Previous: Seoul Eastern District Prosecutor's Office, Criminal Division 2
Seo-in, Kim		Previous: auditor, Sae Si Dae	2023.12.03~2025.12.02



# Certifications & Awards Received

## FYF Program Awards Received

**2023 Environment Ministry's Best Environmental Education Program**

Mercedes-Benz GREEN+Kids Education was selected for its design to help children develop the right values and lifestyle habits for carbon neutrality, its storytelling approach to education, and its use of play and learning kits made from sustainable materials.

**Awards** 2023 Environment Ministry's Best Environmental Education Program (Mercedes-Benz GREEN+Kids)

**Date of Award** 2023.10.18

**Organizer** Environment department

**2022 Family Policy Achievement Awards Presidential Proclamation**

Identify and reward meritorious individuals who have contributed to policy development and business support in the family field, spreading an equal and democratic family couple culture, supporting diverse families, and creating a family-friendly culture.

**Awards** Presidential Award for Family Policy Achievements in Commemoration of Family Month (Shinhan Dream Doctor)

**Date of Award** 2022.05.22

**Organizer** Department of Women and Family Affairs

**2021 Minister of Education Award**

Promoting educational donations and spreading the culture of educational donations Discovering and rewarding old institutions and individuals.

**Awards** A ministerial award (Samsung Securities, Youth Economy Class)

**Date of Award** 2021.12.08

**Organizer** the Ministry of Education, Korea Foundation for Science and Creativity

**2021 Ministerial Award for Volunteer Service in Korea**

Our neighbors are dedicated to dealing with national disasters such as COVID-19 a friend who has consistently practiced service and good deeds to Discover water volunteers, organizations, enterprises, etc

**Awards** A ministerial award (Samsung Securities, Youth Economy Class)

**Date of Award** 2021.12.03

**Organizer** Ministry of Public Administration and Security

**Seoul Metropolitan Government's Social Contribution Awards 2021**

It was held by the Seoul Metropolitan Government and the Seoul Welfare Foundation to support cooperation in social contribution by companies and welfare facilities

**Awards** Seoul Welfare Foundation CEO Award (Samsung Securities, Youth Economy Class)

**Date of Award** 2021.11.26

**Organizer** Seoul Welfare Foundation

**Korea Social Contribution Grand Prize 2020**

It was awarded to institutions that contributed to national development through social contribution activities in five areas: job creation, social service, regional development, industrial development.

**Awards** Commendation from the Minister of Health and Welfare (AstraZeneca Korea)

**Date of Award** 2020.12.11

**Organizer** Korea Social Contribution Foundation Korea Social Contribution Awards Organizing Committee

**CSR in the Community 2020**

As a system which started in 2019, continuous social contribution will be made with partnerships with non-profit organizations in the local community. Proceeded to recognize and encourage the hard work of companies and public institutions which took part. Selected at the event "The Day of Recognition of Community Social Contribution." Selected for 2 consecutive years.

**Awards** CSR in the Community (Shinhan Card, AstraZeneca Korea)

**Date of Award** 2019.12.03, 2020.11.30

**Organizer** Ministry of Health and Welfare, Korea National Council on Social Welfare

**2019 Seoul Social Award**

Held since 2017 by the Seoul Metropolitan Government and Seoul Welfare Foundation to support social contribution partnerships of partner organizations such as companies and welfare facilities

**Awards** Excellent Program

**Date of Award** 2019.11.15

**Organizer** Excellent Program

**Received Presidential Citation for Shinhan Card Arumin Library at the "2019 25th Reading Culture Award"**

Held to find and award individuals and organizations that have contributed to promoting the reading culture. K&F was awarded the Presidential Citation in recognition of the Foundation's promotion of the reading culture by operating the Shinhan Card Arumin Library for the past 10 years.

**Awards** Presidential Citation

**Date of Award** 2019.08.31

**Organizer** EMinistry of Culture, Sports and Tourism

**Host** Publication Industry Promotion Agency Of Korea

## FYF Certifications & Awards Received

**Recognized for contributions to urban greening and garden culture revitalization initiatives**

In recognition of his contributions to the initiatives related to 'urban greening and revitalization of garden culture' through the spread of green culture and private cooperation.

**Awards** Revitalizing urban greening and garden culture

**Date of Award** 2023.12.28

**Organizer** Seoul, South Korea

**Certified by GuideStar Korea for highest transparency for "four consecutive years"**

Korea Guide Star, a donor organization evaluation agency, evaluates public interest corporations based on transparency, accountability, financial stability, and efficiency. Awarded the highest transparency certification and crown certification for 6 consecutive years from 2016 to 2021.

**Awards** Perfect scores for Financial Stability / Efficiency / Accountability Transparency

**Date of Award** 2016~2023

**Organizer** GuideStar

**Commendation by the Minister of Information and Culture for Information and Communication and Information Culture Merit**

Contribute to the realization of a digital inclusive society and the revitalization of information culture by discovering and awarding meritorious persons who have contributed to bridging digital digital gaps and responding to digital dysfunction

**Awards** A ministerial award

**Date of Award** 2021.06.22

**Organizer** Ministry of Science and ICT

**Grand Award for Sharing Received**

An award given to individuals who have carried out sharing and volunteer activities while earnestly assuming their respective social duties for the nation and the local community. To find such awardees, the National Assembly, political parties, media, and civic groups come together and they altogether try to spread the culture of sharing through the media.

**Awards** The Presidential Award for Education, Science & Technology

**Date of Award** 2010.05.07

**Organizer** Nanum News

**Grand Awards for Excellence in Sustainability Management**

As an award given by the Korean Standards Association with the cooperation of the GRI, which sets the guideline for a global 'Sustainability Report' of corporations, various stakeholders assess the report through online participation. The award aims to offer feedback for improvement for domestic reports and to contribute to their distribution and proliferation. Award Received: Stakeholder Area (first NPO to be awarded)

**Awards** Social Responsibility Management Award (first NPO to be awarded)

**Date of Award** 2009.11.04

**Awards** Ministry of Knowledge Economy

**Sustainability Report Award Received**

An award for NPOs given by Samil Accounting Firm and Samil Future Foundation through an objective evaluation of the organization's transparency in accountability and outcomes, with an aim to spread a donation culture based on trust.

**Awards** Stakeholder Area (first NPO to be awarded)

**Date of Award** 2009.10.14

**Host** Korean Standards Association

**Recipient of the Best Prize for the Samil Transparency Award**

An award for NPOs given by Samil Accounting Firm and Samil Future Foundation through an objective evaluation of the organization's transparency in accountability and outcomes, with an aim to spread a donation culture based on trust.

**Awards** Best Prize

**Date of Award** 2009.09.01

**Organizer** Samil Future Foundation

**International Youth Foundation (IYF) Certification for Global Partner**

FYF received a Certification of Excellence from the IYF and is the IYF's only global partner in Korea. This certification was based on 13 indices designated by the IYF used to evaluate each organization's management methods and effectiveness of strategies; indices evaluated for influence on youth were independence, objectivity, transparency, effectiveness, and continuity.

**Awards** Excellence

**Date of Award** 2001.12

**Organizer** International Youth Foundation

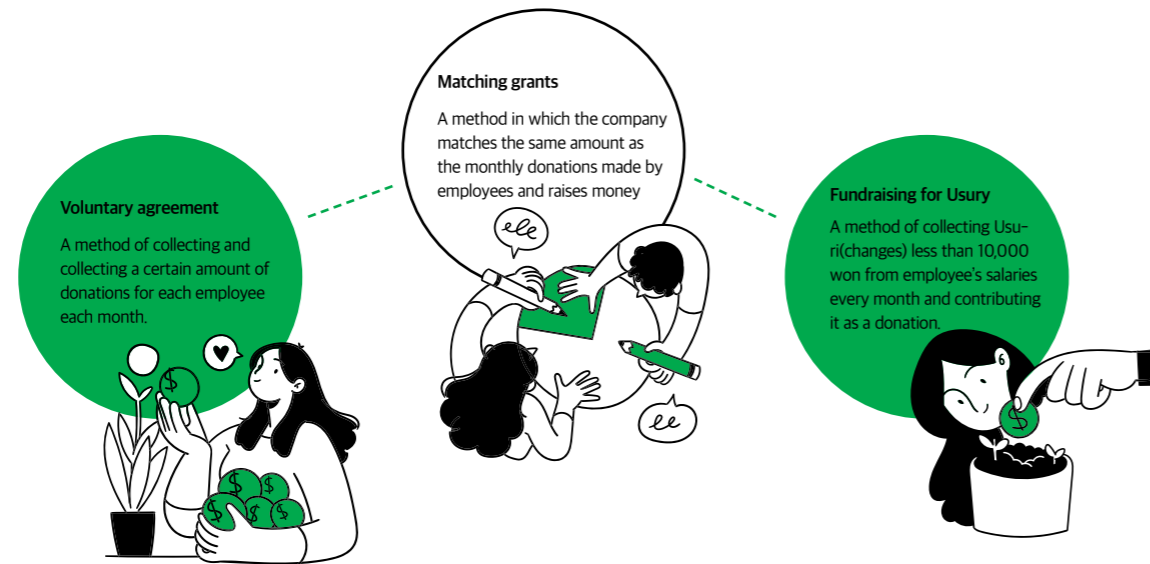
# How to Support FYF

## CSR business partnerships

Founded by venture capitalists and entrepreneurs, the FUTURE FOR YOUTH FOUNDATION has specialized partnership know-how based on a diverse understanding of business and society



## Designated Donations from Employees and Organizations



## How to donate to the Foundation

Common ways to support Support and donations for the Foundation's own causes (healthcare, scholarships, education, etc.)  
Designated Sponsorship Customize your business donation to your donor's liking

## How to Give

**Recurring donations** You can make a monthly donation by direct debit on a date of your choice to help the Foundation stabilize all of its projects and activities, including education, scholarships, and medical care for children and youth.  
**One-time donations** When sharing is needed, you can join in all the business and activities of the Foundation with one application with your precious heart.  
**Deductibility of donations** All donations are tax-deductible (donation receipts are issued by the Foundation).

## Account information

Account Number: Shinhan Bank 100-016-715700 (Account Holder: SAHOEBOKJIBEOPIN AIDEULGWAMIRAE)  
Contact Us: 02-365-8487

Donate



**Location** Sambo B/D 5F, 272, Sadang-ro, Dongjak-gu, Seoul, 07012, Korea  
**Tel** +82-2-843-8478  
**Publisher** Lee Hoon Kyu  
**Issue month** January 2024  
**Place of issue** FUTURE FOR YOUTH FOUNDATION  
**Plan / Edit** Planning & Public Relations Team  
**Design** People Page

